

SemenSPY[®]

Deluxe Home CSI Forensic Edition

Bringing Forensics Home[®]

The Deluxe Kit Contains:

- (1) Micro tube holder (see cut outs in box)
- (1) Pair of universal non-latex vinyl gloves
- (2) Sealed PSA cartridges, desiccants, and pipettes
- (1) UV semen detection light (4 AA batteries not included)
- (1) Alcohol wipe
- (2) Transfer pipettes
- (2) Clear micro tubes
- (1) Disposable scalpel
- (1) Cutting mat (to protect surface)
- (1) 2 Pack – Sterile sealed swabs
- (2) Aqua colored micro tubes with solution

****WARNING USE CAUTION****

Every SemenSPY[®] kit includes a disposable razor sharp scalpel cutting device that can cause injury. *Please follow instructions closely*

Congratulations on your purchase of SemenSPY[®], the most accurate home semen detection kit on the market today. **Read entire instructions before you begin the test to get a feel of the testing process.**

****VERY IMPORTANT****

To avoid contamination always alcohol wipe scalpel, cutting mat and discard pipettes and micro tubes after each test

How does SemenSPY[®] work?

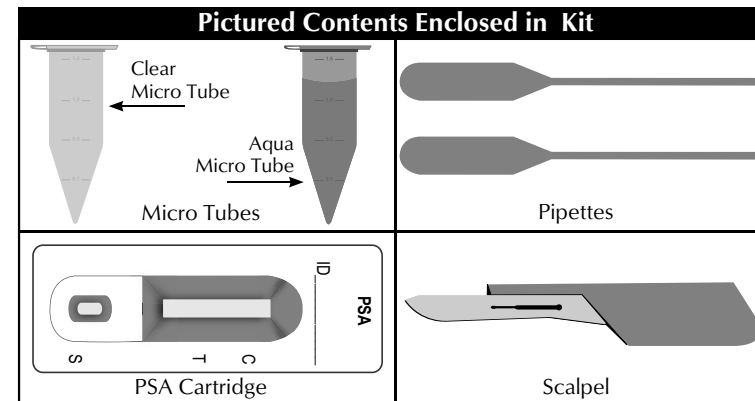
Semen is a bodily fluid mixture that comes from several different organs including the prostate and other glands secreted from men in the form of ejaculation.

SemenSPY[®] uses an extremely accurate testing method called PSA (Prostate Specific Antigen). PSA is one of the major proteins found in seminal fluid and can also be found in the absence of spermatozoa in the case of vasectomized men. Scientists have been able to recover PSA from semen stains as old as 30 years!

That's why PSA testing makes SemenSPY[®] the most accurate home test available, unlike other semen detection products which use a method called AP (Acid Phosphatase), a test scientists consider to be an unreliable "presumptive" testing method. The AP method is not conclusive as it can detect other fluids causing a false positive result. The AP type test is NOT acceptable and NOT recommended!

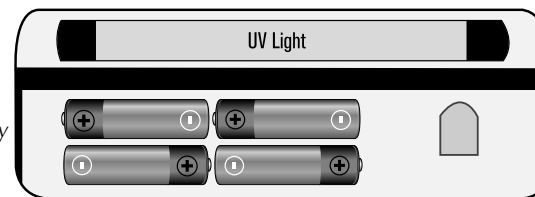
How does the SemenSPY[®] UV Light work?

Included in every SemenSPY[®] kit is our exclusive SemenSPY[®] UV Light (Ultraviolet Light). This is a very popular tool used in many forensic investigations for the identification of bodily fluids found on a variety of articles, which may otherwise be invisible to the naked eye. By using the enclosed SemenSPY[®] UV Light you may find suspicious stains that you can test for semen.



SemenSPY[®] UV Light

Note: 4 AA Batteries Not Included. Battery positions shown

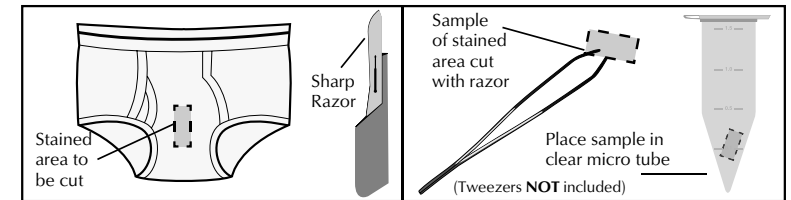


Preparation:

1. Read all instructions thoroughly before starting the testing process.
2. Always scan any article/sample with the SemenSPY[®] UV Light first unless visible to the naked eye. This will help exclude items to be tested, resulting in saving the PSA cartridge for other samples.
3. Allow test sample(s) to adjust to room temperature.
4. Lay out all of the contents for easy access.
5. Put on your universal vinyl non-latex gloves. Use a clean/sterile work space.
6. Place the one clear micro tube in the left holder and the one aqua micro tube in the right holder.
7. Open the **clear** empty micro tube. Now it is time to decide which testing process is best for you. Your choices are **Destructive** and **Non-Destructive**.

Destructive Method: (must cut holes in article/s)

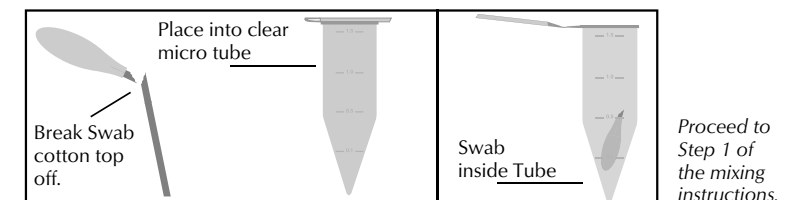
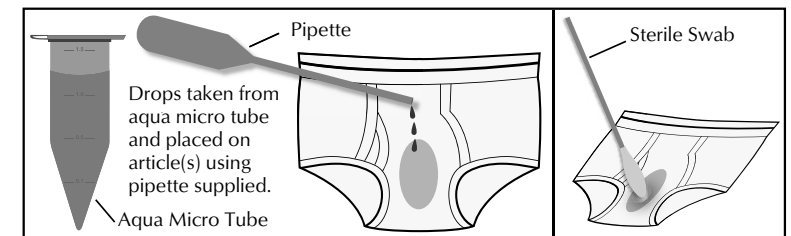
1. Inspect the article(s) and determine where the sample will be cut. 1 to 10 small cuttings of this approx size of .1 x .25 is fine. You can test more than one sample or stained area at the same time, but if the results are positive you will not know from which sample(s) the semen was present. **DO NOT** fill the micro tube with material past the top line (.25 inches from the top).
 2. Place the area to be cut over the provided cutting mat – surface protector. Carefully remove the protective cap from the scalpel. **Scalpel is VERY sharp, so light pressure should work just fine.**
 3. Transfer the sample to the clear micro tube.
 4. Now you are ready to begin the actual test. *Skip to step 1 of the mixing instructions.*
- Skip to Step 1 of the mixing instructions.



Skip to step 1 of the mixing instructions.

Non-Destructive Method: (no damage to article/s)

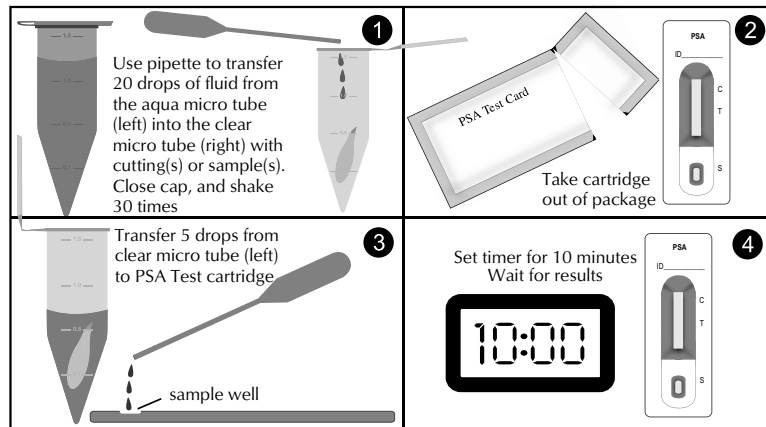
1. Inspect the article(s) and determine where the samples will be taken. The non-destructive method involves the use of the swabs provided with the kit.
2. Dampen the tested area with up to 5 drops of PBS supplied in the aqua micro tube using the pipette.
3. Using the cotton swab immediately wipe the stained area thoroughly.
4. Break off the cotton swab from the handle immediately where the cotton stops and place the broken off swab tip into the **clear** micro tube.
5. Now you are ready to begin the test process. Proceed to step 1 of the mixing instructions. *Proceed to Step 1 of the mixing instructions.*



Proceed to Step 1 of the mixing instructions.

Mixing Instructions: (see illustrations below)

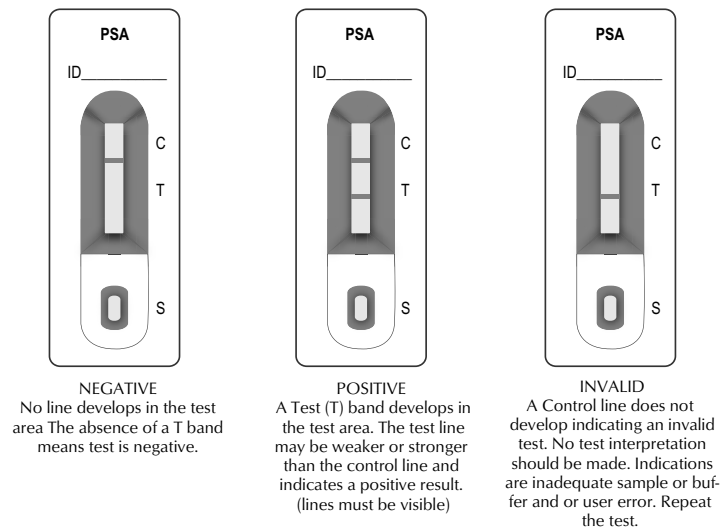
1. Using the pipette included in the **clear** plastic bag, transfer 20 drops of fluid from the **aqua** micro tube into the **clear** micro tube on top of the cutting(s) or sample(s). Close the cover of the **clear** micro tube and shake it at least 30 times. Discard pipette.
2. Open the PSA cartridge package. Discard the moisture desiccant. Place the cartridge on a flat surface with the PSA text facing up.
3. Using the pipette found inside the PSA package, transfer 5 drops from the **clear** micro tube into the sample well of the PSA cartridge (sample well is usually by itself or marked).
4. Set a timer or watch and read results exactly at **10 minutes**. Positive results can be seen as early as 10 seconds. Negative results take the full 10 minutes. **Test results read past 10 minutes are not valid.**



Results: (See Result Illustrations Below)

1. **Positive:** If there are two visible burgundy colored lines in the test region, one in the C – control area and one in the T-test area. Semen is present.
2. **Negative:** If only one line appears in the C – control area the test is negative.
3. **Invalid:** If no C – control line appears in the control test area regardless of the outcome of the test area, the test is considered defective, invalid, inconclusive, or improperly performed. Repeat the process using another NEW PSA cartridge.

PSA Cartridge Illustration:



****REMINDER – WARNING****

The scalpel is a razor sharp device that can cause injury. The scalpel can also cause damage to your working surface if you do not use the protective 2x2 cutting mat that was provided. Always use the cutting mat when using the scalpel.

The PSA cartridge consists of potentially infectious antibodies if broke open. Use caution.

UPON COMPLETION OF THE TEST, PLACE THE PSA CARTRIDGE, MICRO TUBES AND OTHER THROW AWAYS INTO THE PLASTIC BAG AND DISCARD SAFELY. ALWAYS KEEP EVERYTHING AWAY FROM CHILDREN.

SemenSPY® TIPS:

Read all instructions thoroughly, check package for all contents (all packages go through a quality check before shipped), and become familiar with the procedure before starting.

SemenSPY® is a VERY accurate home test for the presence of semen. Like with any other home test always feel free to send the contents of clear micro tube and the tested article out to our accredited laboratory for possible DNA extraction and verification if desired.

SemenSPY® would like to thank you for your purchase. NOTE: You can always purchase additional PSA cartridges and micro tubes including saline needed to perform additional tests without purchasing a whole new kit at a very reasonable cost.

****FREQUENTLY ASKED QUESTIONS****

How long can semen stains remain present?

Semen stains can remain present for very long periods of time. Though most people are only concerned with testing items that are thought to have recently been soiled with semen traces, laboratory tests have re-revealed traces of semen on articles over 30+ years old, as long as the article has not been washed.

What if the material is white and I can't see a stain?

All of our kits include our **SemenSPY®** UV Light that aids to uncover and identify even completely invisible traces of semen that may be locked into the fibers of the suspected article/s. **SemenSPY®** works on any type or color of material.

Will the test stain or damage the article/s being tested?

No, the test will not stain any article/s being tested regardless of the method chosen. There are two testing methods that can be conducted during the process. The **destructive method** will cause damage where as the **non destructive method** will not.

Can I test any article for semen? Like a seat in a car or a sofa?

YES! **SemenSPY®** was designed specifically for the home user and does not

stain any article being tested. Semen traces can be anywhere.

I'm a male and I want to test a female. Will I detect myself?

YES! You must abstain from having intercourse with the female you want to test for a period of time so your seminal fluid will not be detected.

Will this test kit work if the woman or man uses a condom?

Condoms are designed to keep semen out. People also use condoms much less frequently than the media wants you to believe. Think about anytime you have had sex using a condom to know that the chances of semen being present after sex are excellent due to a term called "outer-course".

Usually the first thing a male does after having intercourse using a condom is remove it. At that time there is usually some time of affection or activity that takes place and usually the male is lying on top of the female at some point. It is during this "Outer-course" that semen is deposited onto the woman's body.

NOTE: Men continue to secrete small amounts of semen for up to 2 hours or more after each sexual encounter. Long after the initial sex act a male will have dried / invisible to the eye traces of semen present in his undergarments. Even if a male uses a condom during sexual intercourse or even if he only had oral sex performed on himself, there will still be traces of semen in his underwear every single time.

If it is an affair and the female in question doesn't have the proper amount of time to get thoroughly cleaned up, the chances are very good that semen stains may be present on different areas of the inside of her clothing. Men have reported finding traces of semen on the insides of shirts, blouses, coats, pants and many other articles. Remember oral sex happens too. Be sure to use the **SemenSPY®** UV Light to check over articles of clothing carefully for signs.