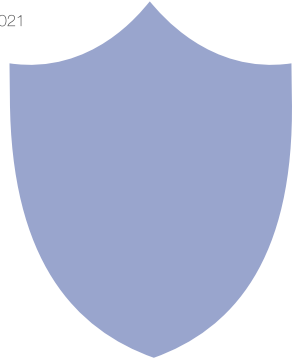


Ultra Long Standby Wi-Fi Security Camera with Low Power Consumption

User Manual

Version: August,2021

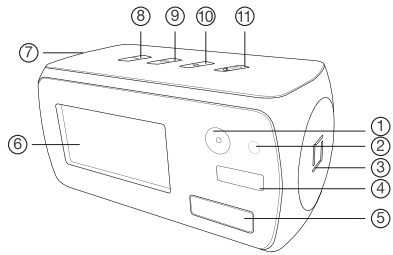


Size: 110x52x52mm



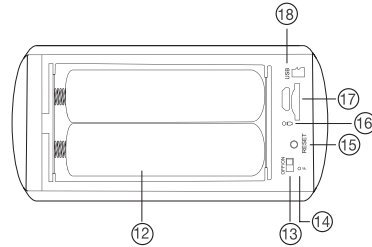
Tips: Please take off the transparent protect film on the device and replace it with a black lens cover (Plastic) before using.

Product structure



- ① Camera
- ② Light sensor
- ③ Clock speaker
- ④ Invisible night vision leds
- ⑤ PIR sensor
- ⑥ Time display
- ⑦ Camera speaker
- ⑧ ⑩ + -
- ⑨ Time setting
- ⑪ Wake up/Alarm switch

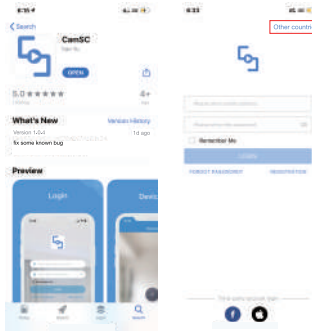
3



- ⑫ Batteries
- ⑬ ON/OFF switch
- ⑭ WiFi indicator
- ⑮ Reset key
- ⑯ Charging indicator
- ⑰ Micro SD card slot
- ⑱ USB Port

4

2. Open APP CamSC, select current region at the top right corner. Register with email, or third-party account like Facebook or IOS account. (Tips: If a code doesn't arrive, please check the spam folder first.)

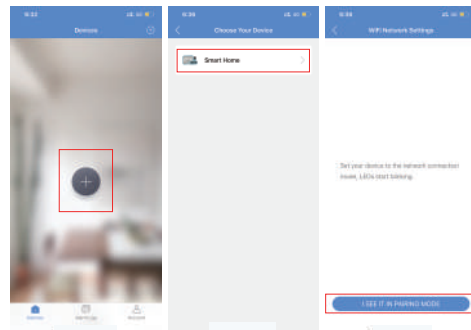


7

Step 2: Take off back cover --> Insert micro SD card --> Turn back ON/OFF switch (WiFi indicator is solid blue);

Step 3:Connect WiFi

1. Press Reset key 4 seconds till a beep sound(WiFi indicator blink slowly and ready for pairing WiFi);
2. Open APP CamSC >> Click + >> Smart Home >> Device in pairing mode >> CAM-xxxxxx.



8

Quick guide of Wi-Fi camera function:

1.Download & Install Free App <CamSC> from App Store or Google Play;

Tips: Please allow "CamSC" to notification, Bluetooth and location while using the App.

2.Enter App, select your region at the top right corner and register;

Tips: If a code doesn't arrive, please check the spam folder first.

3. Take off back cover-->Insert micro SD card --> Turn back ON/OFF switch, press reset key 4 seconds till a beep sound (Pairing mode is ready now).

4. Enter App, Click + >> Smart Home >> Pairing Mode >> Click device name >> Select Wi-Fi >> Input password > NEXT.

5. Device online in around 10 seconds & Wi-Fi live video is ready.

P.S.: Contact local dealer for tutorial video setting up.

1

Reset key tips:

One press to restart device;
4 seconds press to pair with WiFi (First double beep);
6 seconds press to reset device (Second double beep).

Wi-Fi indicator tips:

Blue LED blinking when pairing with WiFi;
Turn off when WiFi paired;
Blink once when motion detected.

Charging indicator tips:

Solid red when charging, and off when fully charged.

Clock part setting

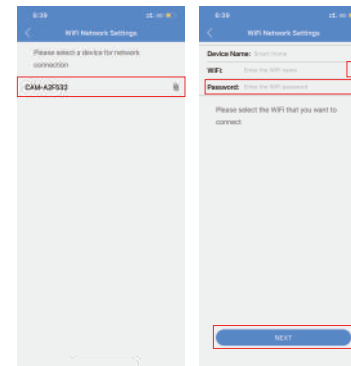
☀/🌙: Short press = Wake up (Sleep in 10 seconds when no operation)
Long press = Turn off / on alarm

+ - 12h / 24h

⚙ Time setting

5

3. Click > at the end of WiFi to select the local router WiFi, then input password.
Click NEXT and wait around 10 seconds to finish the configuring; Device Binding Successful and online now.



9

Overview:

The Ultra Long Standby WiFi Security Camera, it is built with high tech of super low power consumption 450µA/hour to save energy for around 1 year standby after being fully charged.

First, it can be used for watching live streaming video day and night (night vision around 5 meters), or taking photo and video by APP in smart-phone remotely after WiFi connected;

Second, its PIR sensor will make precisely motion detect recording for surveillance use (around 5 meters distance and 2 meters height) . Also, it has cycle recording and work when charging.

Usages: Nanny camera, Home/ Shop/ Office/ Warehouse surveillance camera.....

Warning : " illegal use is not allowed! Or, there will be consequences to bear! "

In the box:

- 1 x Camera Unit
- 1 x Micro SD Card Reader
- 1 x USB Cable
- 1 x User Manual

2

Wi-Fi Camera Connection Setting

Step1: CamSC APP

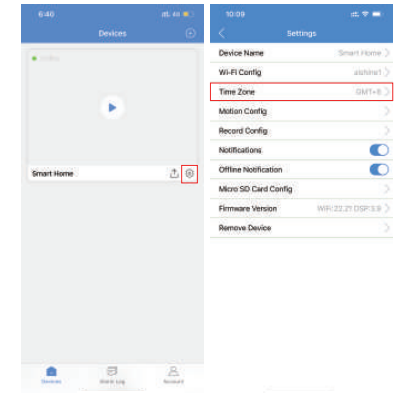
1. Scan below QR code or search and download free APP named <CamSC> in Apple APP store, Google play or Electronic market, and install it;



APP:CamSC

6


4. Click ⚙ in APP'S first interface, select Time Zone and choose Time Zone to ensure live streaming video with the set time zone.

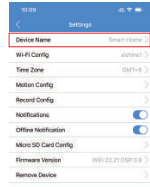


10

Camera Normal Status:

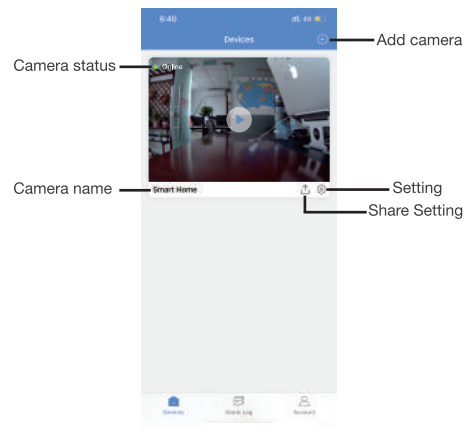
1. Camera always in standby mode;
2. Once motion detected, it will push a notification to phone, do a snapshot and record a 15 seconds video clip into memory card;
3. Sleep and alert after 1 minute once motion detected again.

Set name: Press the  after the camera, select Device Name
--> Input needed name like Office, Living room etc...

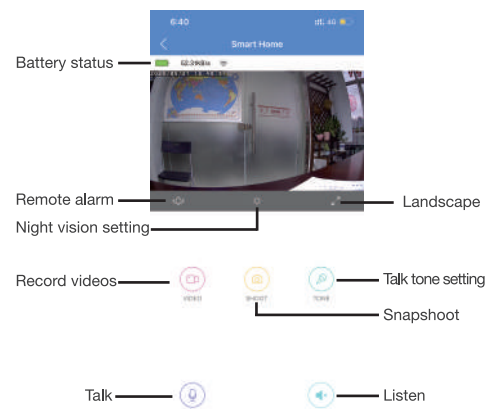


11

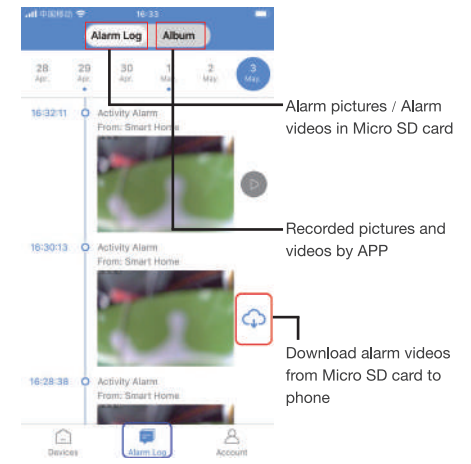
APP Introduction



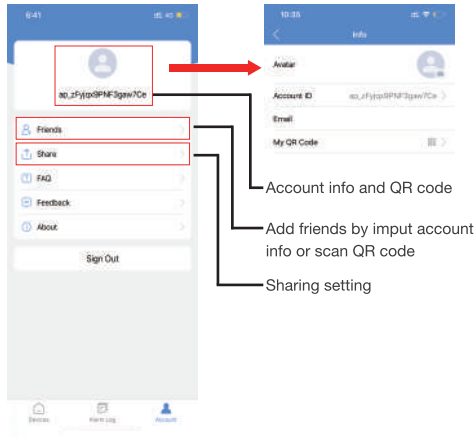
12



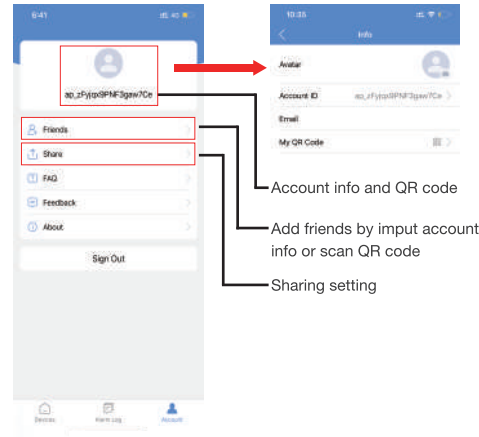
13



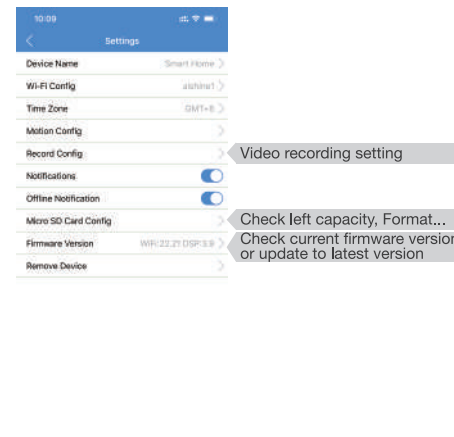
14



15



16



17

Specification

Resolution	2 Mega CMOS
Video pixel	1920*1080
Compressed format	H.264
View angle	145 Degree
Type of memory card	TF card=>Class 4/10 and HC marked
Maximum capacity of memory card	64GB
Mobile phone operation system	Android/iOS
Compatible router	2.4G and Mobile hotspot
Two way talking	Yes
PIR alarm pictures in server	15days
Battery capacity	2 x 2600mAh
Standby power consumption	500µA
Power consumption	350mAh
Power consumption with night vision	610mAh
Recording	1 minute/ around 24MB
Standby time	Around 1 year
Charging time	Around 12 hours
Power adapter (not include but needed)	5V / 2A

18

FAQ

1. Is device with offline and low power notification?
Yes.
2. What does the device do when WiFi off?
Keep searching WiFi signal 3mins, 10mins, 1hour, 2 hours, 5hours,24hours later; If WiFi on, it will be connected to WiFi automatically.
3. If the steps in Page 9 can't move forward (Bluetooth Pairing Mode)?
Delete the App and Download again to test, and agree all permissions (Allow notification, Bluetooth and location).



The end!